



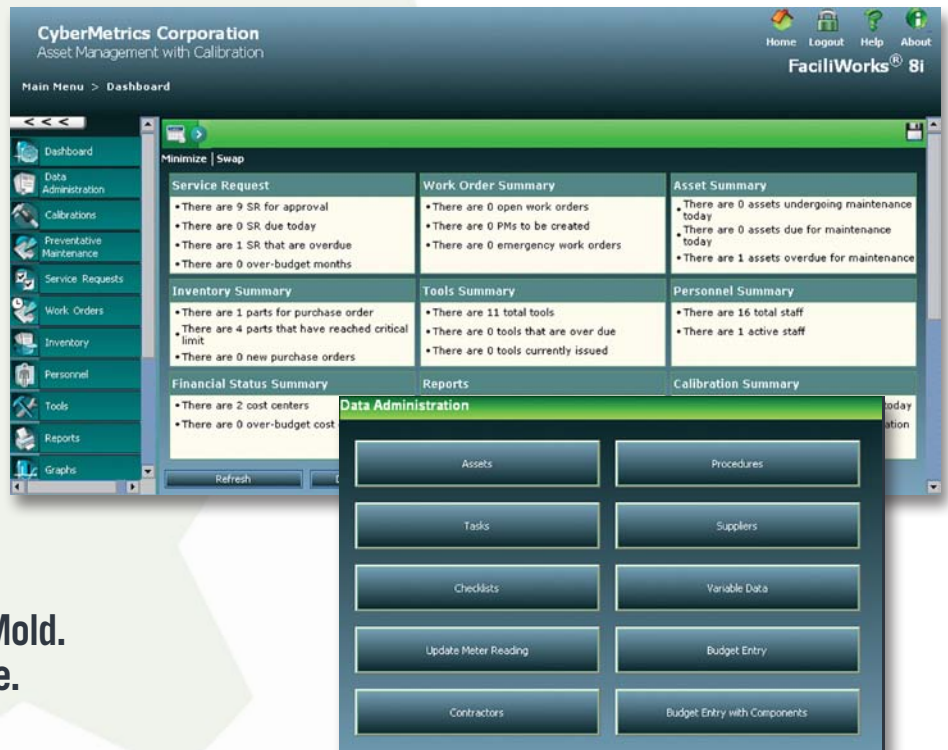
FaciliWorks[®]

8i Server

Introducing the New FaciliWorks 8i

FaciliWorks 8i Enterprise Asset Management software is the highest quality web-based software product available for the facilities maintenance marketplace. Easy to implement, easy to use and affordably priced, FaciliWorks 8i will help you reduce maintenance costs, improve productivity and ensure greater asset uptime.

- View your operations and asset status in real time with dashboard analytics.
- Easily submit, queue and manage work orders and service requests.
- Customize the comprehensive set of reports to fit your specific needs.
- Use the workflow management system to define tasks, triggers and notification events.
- Use calibration scheduling and analysis for your measurement and test equipment. (8i Calibration)



Customizable

Our new customizable dashboard interface displays a summary of the items that need your attention for the day, allows you to easily navigate to any feature of the software and lets you create your own shortcuts to get quick access to the features you use most often. Even the language setting is customizable to each user; FaciliWorks can now be viewed in English, Spanish, French or German.

Your Business Doesn't Fit a Mold. Neither Should Your Software.

Scalable

Whether your business has a single location or multiple facilities worldwide, whether used by management, engineers or technicians, FaciliWorks 8i can be scaled to fit your needs and your budget and is designed to grow with your organization. Backed by our 30-day guarantee and our talented team of experts, FaciliWorks 8i will keep your company operating smoothly and efficiently.

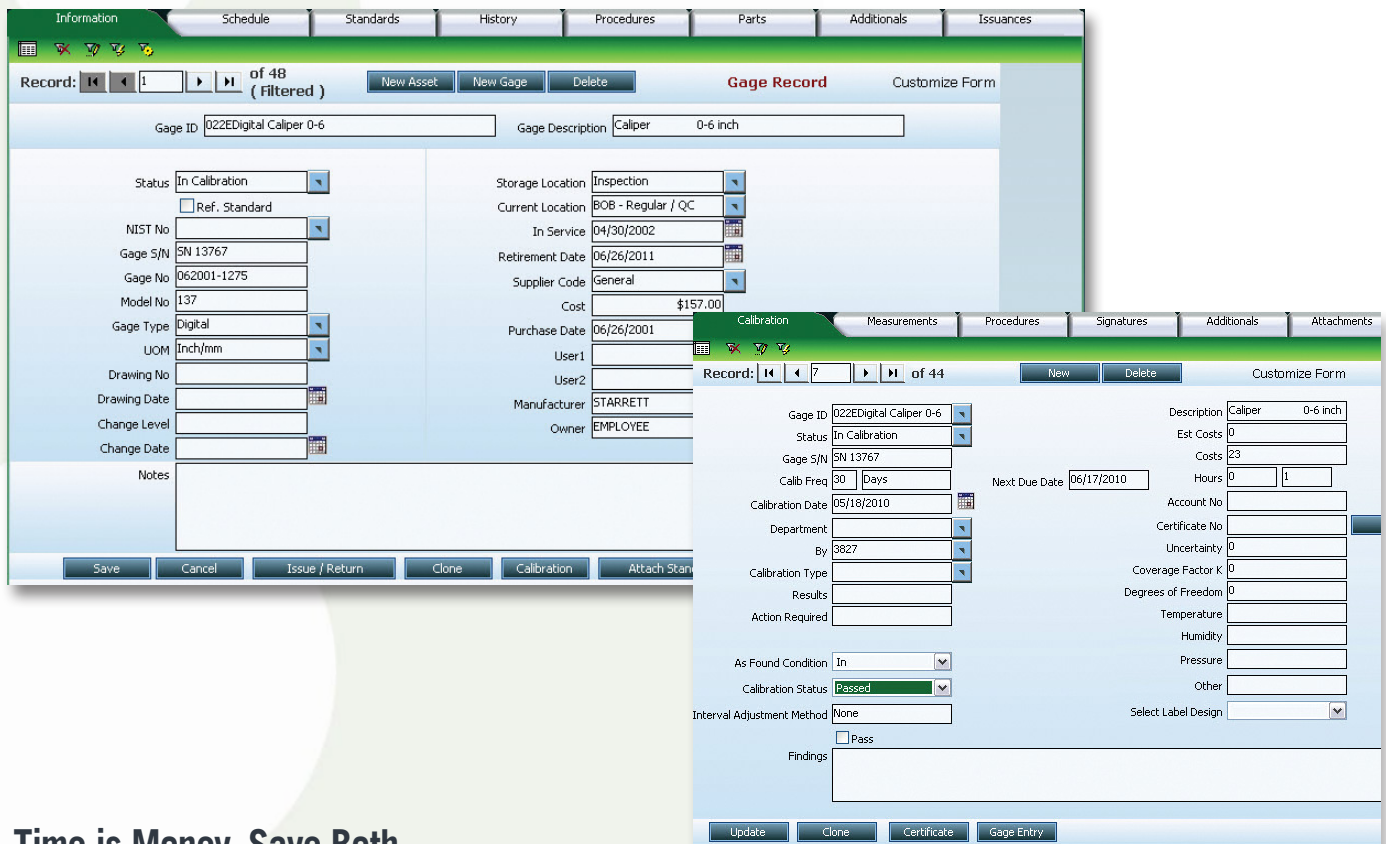
Automatic

Automatic preventative maintenance alerts and a workload calendar assure that no asset will be forgotten, which means longer equipment life, fewer repairs and reduced expenditure.

August 2010

Time Until Automatic Refresh: 2 Min

Sun	Mon	Tue	Wed	Thu	Fri	Sat
25	26 11 Jobs 1 Hours	27 18 Jobs 1 Hours	28 11 Jobs 1 Hours	29 11 Jobs 1 Hours	30 23 Jobs 25.75 Hours	31
1	2 13 Jobs 1.25 Hours	3 18 Jobs 1 Hours	4 11 Jobs 1 Hours	5 21 Jobs 15 Hours	6 32 Jobs 43 Hours	7
8	9 15 Jobs 2.75 Hours	10 19 Jobs 4 Hours	11 11 Jobs 1 Hours	12 12 Jobs 1.25 Hours	13 15 Jobs 4 Hours	14
15	16 11 Jobs 1 Hours	17 18 Jobs 1 Hours	18 16 Jobs 11 Hours	19 14 Jobs 1.75 Hours	20 14 Jobs 2.25 Hours	21
22	23 12 Jobs 1 Hours	24 18 Jobs 1 Hours	25 11 Jobs 1 Hours	26 11 Jobs 1 Hours	27 15 Jobs 1.75 Hours	28
29	30 12 Jobs 1.25 Hours	31 26 Jobs 25 Hours	1 11 Jobs 1 Hours	2 11 Jobs 1 Hours	3 42 Jobs 27.75 Hours	4



Time is Money. Save Both.

Over 12,000 facilities worldwide use our software to improve productivity, optimize inventory, reduce costs and manage their assets. FaciliWorks 8i provides the tools you need to effectively track and schedule your maintenance tasks, personnel, assets, parts and supplies and generate corrective work orders.

Two Powerful Products. One Ground-breaking System.

FaciliWorks 8i Calibration combines all of the benefits of FaciliWorks 8i with the power of our GAGetrak® software, the world's leading calibration management software, to deliver an all-in-one enterprise asset management server solution.

Incorporating calibration with FaciliWorks 8i allows for gage entry, calibration scheduling, tracking of gage locations, retrieval of calibration records, production of calibration certificates and the ability to track the as-found condition of gages. You can schedule a PM and a calibration on the same asset, assign a gage ID as a standard and attach calibration certificates to procedure records.

Stay on Track.

FaciliWorks simplifies the validation process with its backup/restore feature, built-in referential integrity checks, field-level input validation, standard reports and a sample validation database for end-user testing and verification. And, because FaciliWorks 8i can now incorporate calibration management, our 8i Calibration Validation Kit supports both CMMS and calibration to meet requirements for single-track FDA validation.

You Maintain Your Facility. We'll Maintain Your Data.

FaciliWorks 8i offers the convenience and ease of a single server installation and a single database. We can take care of your data transfer, allowing you to be up and running very quickly to focus on what you do best. We can even provide hosting services, keeping your data safe and secure while eliminating additional hardware and database maintenance expenses.

It's All in the Details

Extended Asset Life

Any item that requires maintenance or tracking, such as a piece of equipment, vehicle, system or facility can be recorded as an asset in FaciliWorks.

- Maintain detailed records on all assets, tools, parts and personnel.
- Track work instructions, repair procedures and task checklists.
- Generate purchase orders.
- Track and optimize inventory.
- Track authorized persons.
- Track warranties, service contracts and leases.
- Duplicate records with all associated tasks, parts and tools using the Clone function.
- Track and maintain parts and sub-assemblies with component hierarchies.

Asset Grouping*

Separate assets into user-defined groups to partition a shared database by department, location or any other criteria. Limiting user access improves record security while still allowing full access to managers.

Service Requests & Work Orders

- Service requests can be created, edited or approved and converted into work orders automatically.
- Advanced scheduling allows you to balance the workload among your resources.
- Automatic task scheduling and seasonal maintenance refine your work schedule.
- Track all inventory and labor hours including total hours, regular hours and overtime.
- Use Multitask Work Orders to perform multiple tasks on a single asset.
- Use Route Preventative Maintenance to perform checks on multiple assets, prioritized or set to minimum travel time.

Interface & Data Entry

- The user interface is easy to learn and use.
- All interface elements can be customized so you can use the terminology your company prefers.
- User-definable tabs provide even more room to enter data, allowing more flexibility.
- Accessing and using the entry screens for receiving and using parts is quick and easy.
- Attach any document to an asset, part or procedure.
- FaciliWorks 8i supports bar code input.

Reports & Analysis

- Utilize hundreds of integrated reports and graphs to understand your business.
- Filter to retrieve the information you need, export as Excel, Word or PDF files and then print, fax or email.
- A custom report writer allows you to modify the information you choose to track within the system.
- Customize reports with your company logo, colors, fonts, page numbering and record separator lines.

Workflow*

The Workflow feature allows you to establish trigger events and create a series of steps to be automatically performed when the trigger event occurs. A trigger event could be a field change, the creation of a record or the deletion of a record.

*Available only with FaciliWorks 8i Enterprise.

FDA Compliance Support

21 CFR Part 11 sets forth the FDA's standard for electronic signatures and tracking of all changes made to your database. Companies that wish to have electronic records and electronic signatures accepted as equivalent to the corresponding paper must comply with this standard. The FaciliWorks security features make implementing 21 CFR Part 11 in your workplace simple, straightforward and secure.

CyberMetrics voluntarily undergoes independent third-party audit, review and certification of FaciliWorks. This includes on-site inspection of our records, product development practices, testing methods, maintenance procedures and specific functional assessment of our software. Copies of our compliance certification letters are available upon request.

Security

The 21 CFR Part 11-compliant version of FaciliWorks requires security to be active at all times and automatically enables the Electronic Signature and Audit Trail features.

With security enabled, a user's access to forms and fields within forms can be limited; for instance, a user can view the Labor form under Work Orders but cannot view the Cost field in that form. To make security easier to implement, you can create groups with standardized access privileges and assign users to groups as needed.

Electronic Signatures and Approvals

The 21 CFR Part 11-compliant version of FaciliWorks records signatures and approval signatures upon the completion of maintenance and checklists and the creation of purchase orders.

Once a record has been signed, it cannot be modified unless the original signer unsigns it. FaciliWorks 8i maintains a comprehensive history of all signings and unsignings of a given record, including date, time and name of the signer.

Audit Trail

The 21 CFR Part 11-compliant version of FaciliWorks automatically enables the Audit Trail, which maintains a comprehensive history of all user actions such as record modifications, additions and deletions along with the date and time of each action and name of the user who performed the action. The Audit Trail is preserved indefinitely in the 21 CFR Part 11-compliant version of FaciliWorks; however the standard version allows the purging of these records after a set number of days.

The screenshot displays the 'Audit Log' interface. At the top, there is a green header bar with the text 'Audit Log Details' and a 'Customize Form' link. Below this is a table with four columns: 'Field Name', 'Old Value', 'New Value', and 'Memo Value'. The first row shows 'SettingValue' with an old value of '2' and a new value of '1'. Below the table is a 'Close' button. The main 'Audit Log' window shows a table with the following columns: 'Audit ID', 'Date / Time', 'User Name', 'Object', 'Action', 'Data Key', and 'Details'. The table contains 15 rows of data, with the most recent entry at the bottom.

Audit ID	Date / Time	User Name	Object	Action	Data Key	Details
365	06/03/2010 19:26:03	Default User	SYSTEM_USER_SESSION_INFO	Delete	06/03/2010 18:49:56	Details
364	06/03/2010 18:46:00	Default User	SYSTEM_USER_SESSION_INFO	Delete	06/03/2010 18:11:48	Details
363	06/03/2010 18:38:59	Default User	SYSTEM_SETTING_DETAIL	Update	3416	Details
362	06/03/2010 18:38:49	Default User	SYSTEM_SETTING_DETAIL	Update	3416	Details
360	06/03/2010 18:16:49	Default User	EQUIPMENT_EVENT	Update	607	Details
361	06/03/2010 18:16:49	Default User	EQUIPMENT_EVENT	Update	608	Details
359	06/03/2010 18:16:28	Default User	EQUIPMENT_WARRANTY_ITEM	Update	1	Details
358	06/03/2010 18:11:47	Default User	SYSTEM_SETTING_DETAIL	Update	3110	Details
357	06/03/2010 17:47:17	Default User	SECURITY_USER	Update	13714518211619411318	Details
356	06/03/2010 17:47:00	Default User	SYSTEM_USER_SESSION_INFO	Delete	06/03/2010 17:46:34	Details
355	06/03/2010 17:46:34	Default User	SECURITY_USER	Update	13714518211619411318	Details

FaciliWorks 8i Professional Edition includes the following features:

- Dashboard Analytics - Monitor current system status
- Customizable User Interface - Manage data fields and program configuration
- Asset Tracking - Warranties, history, events and costs
- Work Orders and Preventative Maintenance
- Service Requests - Submit work requests & generate status reports
- Email Notification - Manage service request and work order notification
- Maintenance Job Calendar - Includes work orders, PMs and open service requests
- Predictive Maintenance - Create predictive data measures
- Task Tracking - Monitor labor, parts, tools and variables by task
- Maintenance Procedures - Define procedures and attach images, text files, etc.
- Custom reporting and catalogue of pre-defined reports and graphs
- Personnel Tracking - Craft, training, work history
- Tool Crib Manager - Issue and return traceability
- Standards Compliance - ISO, TS, AS, ANSI and FDA Compliance (Embedded 21 CFR Part 11 integration)
- Data Security - Global, personal, field/record level
- Data Format/Load - Spreadsheet template data input
- Data Transfer Utility - Load, transfer and import data
- Data Access/Security - Independent Application Login or Active Directory
- Multi-Language Support - English, Spanish, French and German
- Pre/post PM email notification
- Inventory/Spare Parts - Spare parts, suppliers, warehouses
- Procurement Support - Purchase orders, reorder, receive
- Mobile Device Support - 1D barcode access to work orders and inventory

Upgrade to FaciliWorks 8i Enterprise Edition to get all of the features listed above, plus:

- Asset Grouping - Group assets by location or department
- Multitask Work Orders - Multiple tasks on a single work order
- Workflow Triggers - Create custom workflow action routines

FaciliWorks 8i Calibration

Combine all of the benefits of FaciliWorks 8i with the power of our GAGEtrak® product, the world's leading calibration management software, for an all-in-one solution. Calibration can be integrated with either of the 8i editions above.

- Gage Management - Gage records, attributes, parts, history
- Gage Traceability - Complete historical cross-reference
- Gage Crib Manager - Issue and return traceability
- Out-of-tolerance Alert - Calibration trigger
- Calibration Request - Email notification, multiple gages
- Calibration Scheduler - Scheduled & unscheduled, due dates
- Calibration Procedures - Catalog of calibration procedures
- Capture all measurement readings
- Standards Compliance - ISO, TS, AS, ANSI and FDA Compliance
- Ability to print professional, auditable calibration labels

If these features are more extensive than you need, please ask about FaciliWorks 8i Starter Edition.

Product Options

FaciliWorks Web Service Requests

FaciliWorks Web Service Requests improve the efficiency of your maintenance department by allowing an unlimited number of users in various locations to quickly create and submit service requests to a central maintenance department, eliminating time-consuming phone calls and written requests, while providing centralized documentation of every service request and its outcome.

FaciliWorks PDA

Perform maintenance and inventory in the field with your PDA handheld computer, then transfer the data back to your FaciliWorks database.



You can even add a built-in laser bar code reader to scan labels printed by our Maintenance Label Kit. It's a great way to save data entry time and cut down on costly errors.

FaciliWorks Maintenance Label Kit



Print durable, laminated, bar-coded labels directly from FaciliWorks. The small-footprint Brother printer comes with cables, design software and everything else you'll need to get started.

TaskPro and SafetyPro

TaskPro is a fully customizable, comprehensive database of maintenance procedures covering 250 different topics related to facility and equipment maintenance and easily installs directly into your FaciliWorks database.

SafetyPro is a database of step-by-step safety checklists to assist with OSHA compliance. It covers 40 different topics including fire protection, stairs and stairways, hand tools and just about anything else you might need.

Professional Services

CyberMetrics offers a variety of comprehensive professional services including product implementation, data collection and import services, consultation and customization to assure that our software solutions maximize your productivity.

Training

Three convenient and effective training options are available to fit your needs: personalized web training, two-day regional training and on-site training. Our talented instructors will guide you through the planning, preparation, setup and successful operation of FaciliWorks Enterprise Asset Management Software. You'll learn how to save time, avoid common mistakes and get the most out of your software.

Invest in Stability

When you invest time and money in a software solution, it's important to choose a provider with a solid, long-standing reputation. CyberMetrics has been in business since 1988, so rest assured that our team of professionals will be available to you, providing on-going support, education and consultation services, making sure you get the most out of your investment.

Free Software Trial

Find out why over 12,000 facilities worldwide rely on our software solutions to manage their assets, improve efficiency and minimize costs.

Contact us today for a free trial or a personalized web demonstration and we'll show you how FaciliWorks will work for you.



1.800.776.3090

www.cybermetrics.com +001 (480) 295-3465